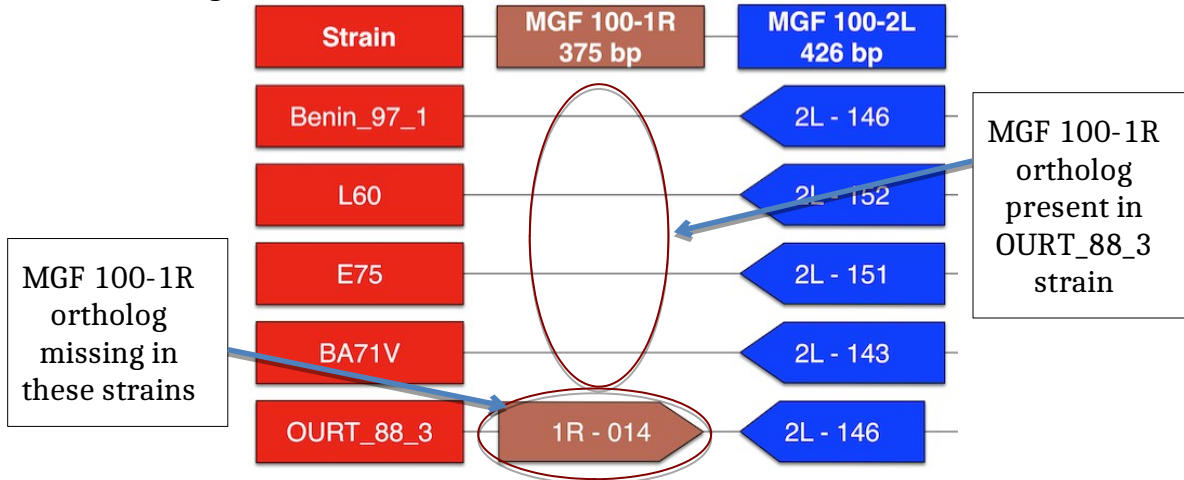


MGF 100 Figure Legend



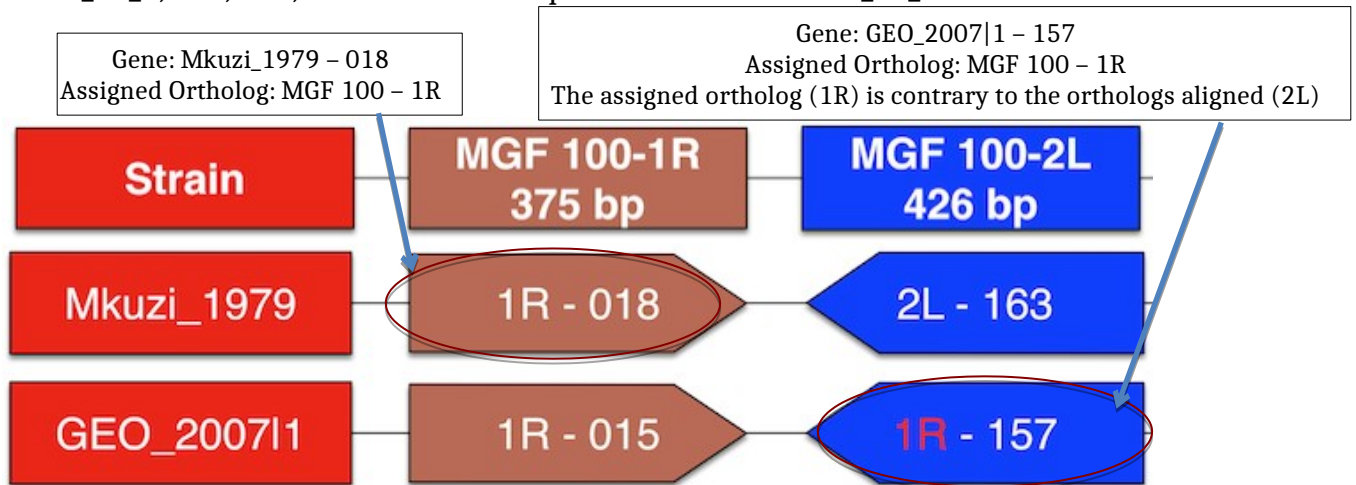
Ortholog columns and gene size:

All genes of same width as the heading are approximately the length of the reference length stated.



Genes:

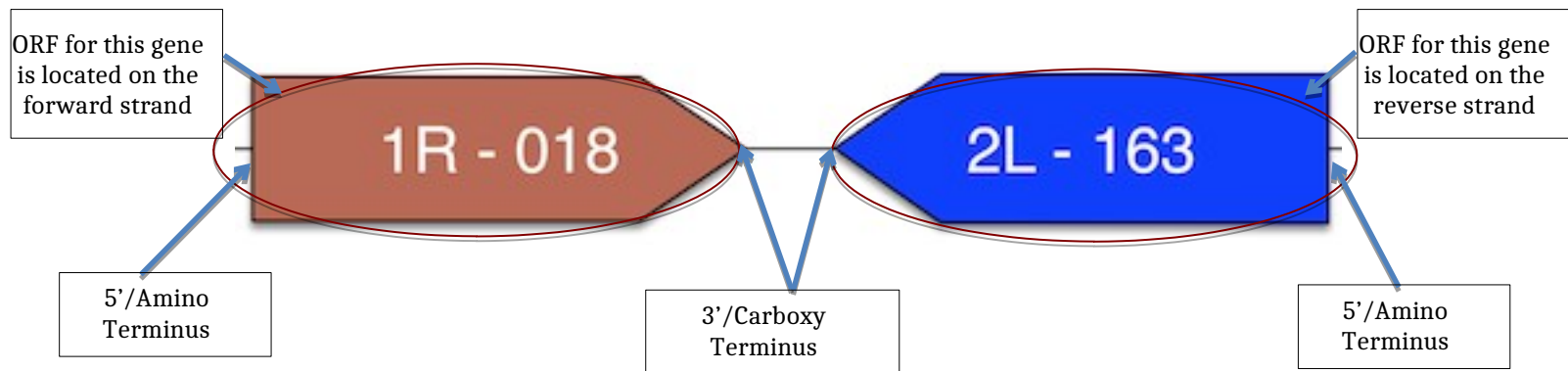
The above figure indicates MGF 100-1R ortholog is missing in strains Benin_97_1, L60, E75, and BA71V but is present in strain OURT_88_3.



Gene labels:

The annotation of each gene is in two parts: first, the ortholog group originally assigned during initial annotation, followed by the corresponding gene number of the connected strain. If the currently assigned ortholog group is labelled in **red**, this indicates that the currently assigned ortholog is contrary to orthologs it aligns to within this diagram.

MGF 100 Figure Legend



Gene Orientation:

MGF 100 has “R” orthologs that are transcribed on the forward strand (5' → 3') and “L” orthologs that are transcribed on the reverse strand (3' ← 5'). “R” gene boxes are pointed to the right and “L” gene boxes are pointed to the left.



Relative gene size and truncations:

A smaller or larger gene box indicates the size difference of the gene relative to other genes of the same ortholog

A 5'/amino terminus that is not aligned with the amino terminus of the full-length genes indicates an amino terminus truncation of this gene.

A 3'/carboxy terminus that is not aligned with the carboxy terminus of the full-length genes indicates a carboxy terminus truncation of this gene.