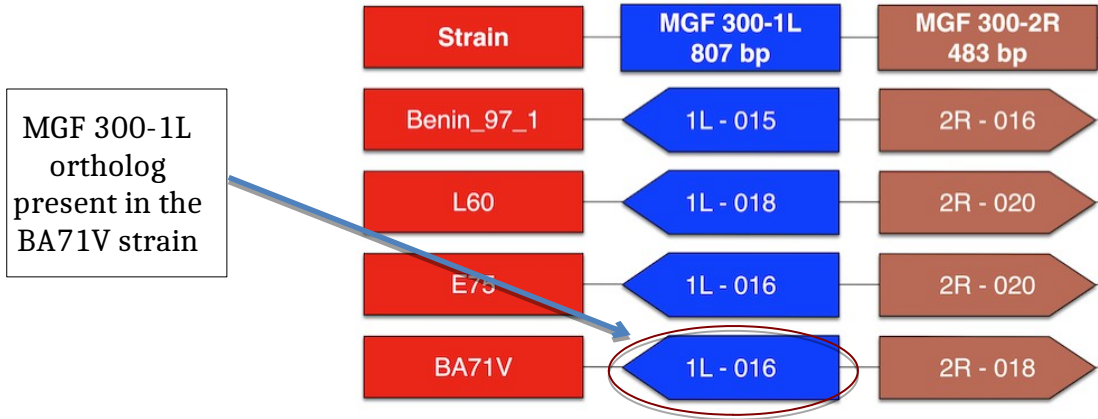


MGF 300 Figure Legend



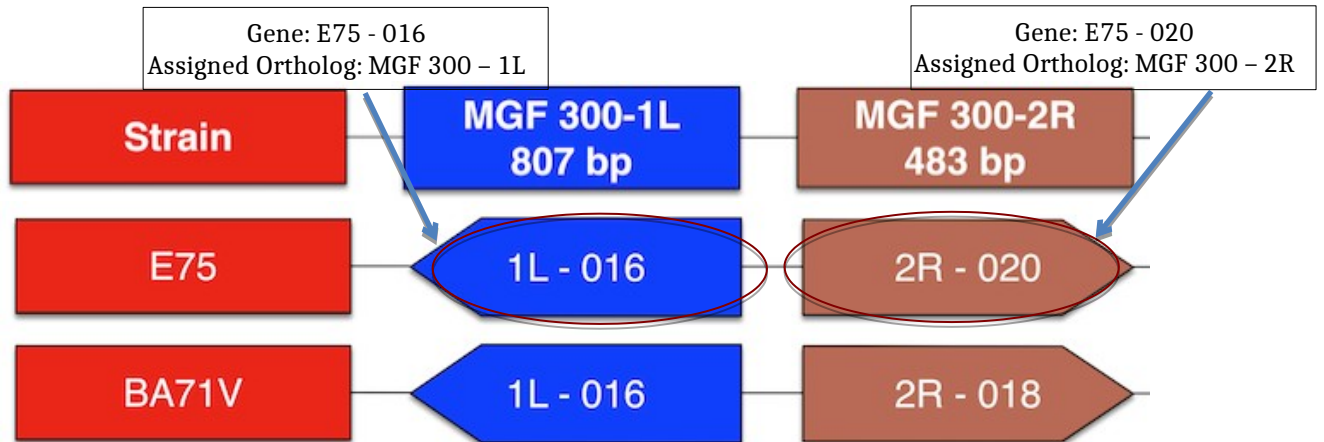
Ortholog columns and gene size:

All genes of same width as the heading are approximately the length of the reference length stated.



Genes:

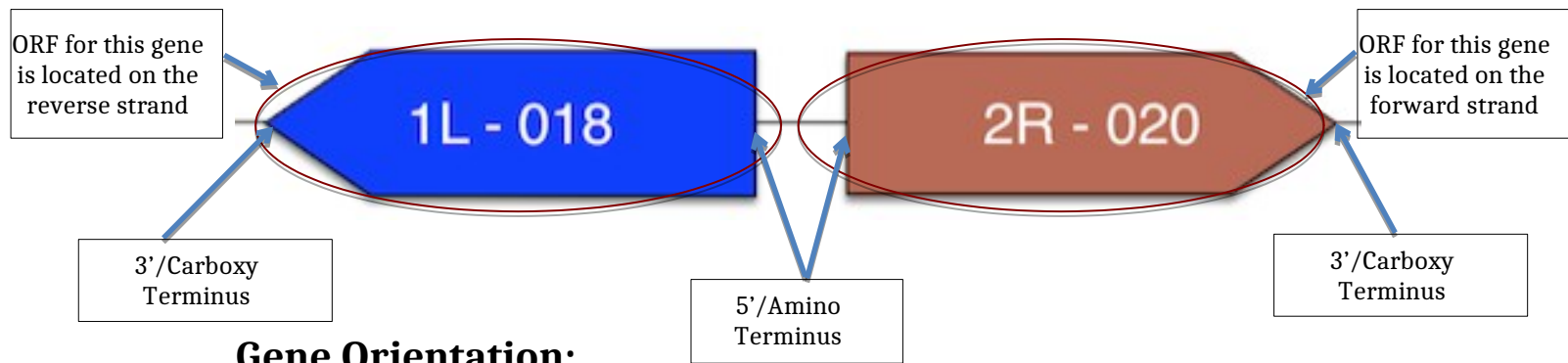
The above figure indicates MGF 300-1L and 2R are present in all of the connected strains listed on the left



Gene labels:

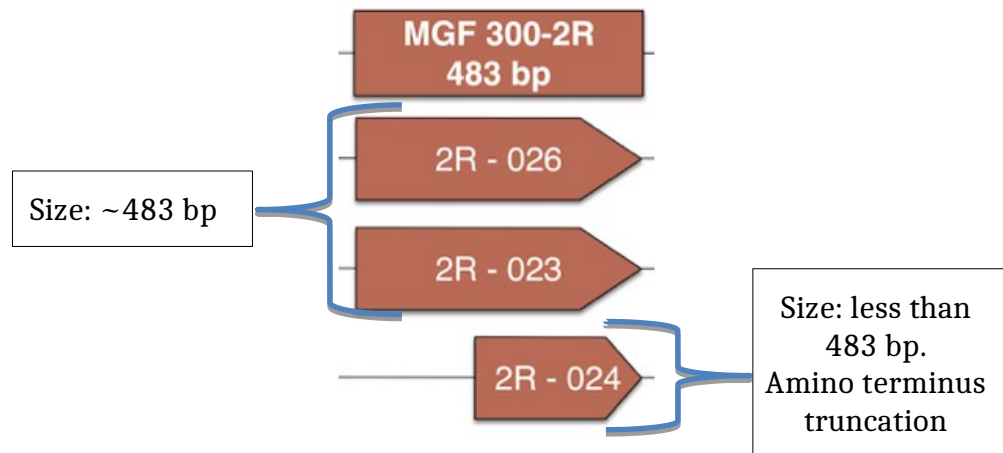
The annotation of each gene is in two parts: first, the ortholog group originally assigned during initial annotation, followed by the corresponding gene number of the connected strain. If the currently assigned ortholog group is labelled in **red**, this indicates that the currently assigned ortholog is contrary to orthologs it aligns to within this diagram.

MGF 300 Figure Legend



Gene Orientation:

MGF 300 has “R” orthologs that are transcribed on the forward strand (5' → 3') and “L” orthologs that are transcribed on the reverse strand (3' ← 5'). “R” gene boxes are pointed to the right and “L” gene boxes are pointed to the left.

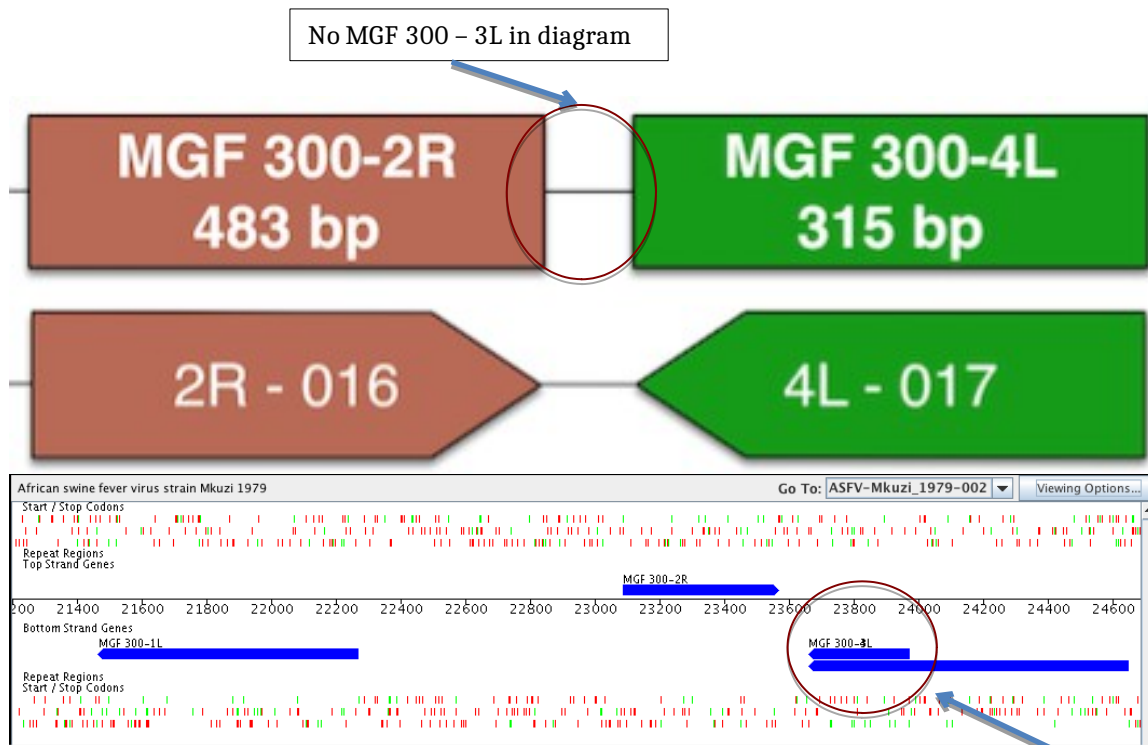


Relative gene size and truncations:

A smaller or larger gene box indicates the size difference of the gene relative to other genes of the same ortholog

A 5'/amino terminus that is not aligned with the amino terminus of the full-length genes indicates an amino terminus truncation of this gene.

MGF 300 Figure Legend



Visual of MGF 300 3L and 4L of Mkuzi. MGF 300-3L is a truncated reading frame of MGF 300-4L. It is not a separate reading frame so not included in this diagram

MGF 300 - 3L missing:

MGF 300 - 3L is not included in this diagram. This is due to the reading frame annotated for the MGF 300 - 3L ortholog being a duplicate MGF 300 - 4L ORF with an amino terminus truncation. MGF 300 - 3L is annotated in strains: Benin_97_1, E75, MWI_Lil_20_1_1983, Mkuzi_1979, KEN_1950.